



INSTALLATION INSTRUCTIONS

VEHICLE APPLICATION

Year: **2006 - 2007**
 Make: **Chevrolet/GMC**
 Model: **2500HD / 3500**
 Engine: **6.6L Duramax LLY/LBZ**

TOOLS REQUIRED

- 10mm Wrench & Socket
- T-20 Security Torx Wrench (Supplied w/ Kit)
- 9/16" Wrench and Socket
- 5/16" Nut Driver or Flat Blade Screwdriver
- Phillips Screwdriver

S&B FILTER MAINTENANCE

- Cleanable (**KF-1035**). If the enclosed filter is Red, it came pre-oiled from the factory. Please visit www.sbfilters.com for exact oil amount required after cleaning.
- Disposable (**KF-1035D**). If the enclosed filter is White, it is a disposable filter and should be discarded once it reaches capacity. This filter (**does not require oil**). For more info on S&B's disposable filter, visit www.sbfilters.com.

NOTES

Kit may not fit with the following Aftermarket Parts installed:

- Body Lift or Lowering Kit
- Custom Hood
- Throttle Body Spacer/ Upgrade

CARB STATUS - PENDING

Product will be submitted to Air Resources Board for approval shortly.

Not Legal for use in CA or other states adopting CA emissions standards"
 See Page 3 for more info.

BEFORE YOU START

- Please read the entire product guide before proceeding.
- Ensure all components listed on page 4 are present.
- If you are missing any of the components, call our customer support at (909) 947-0015.
- Do not work on your vehicle while engine is hot.
- Make sure the engine is turned off and the vehicle is in Park or the Parking Brake is set.

1. With the ignition switched off and the parking brake set, disconnect the negative battery cables on both batteries. **Note: Failure to disconnect the battery may cause the CEL to illuminate upon completion of the installation and subsequent operation. Do not skip this step!**



2. Disconnect the MAF sensor harness.



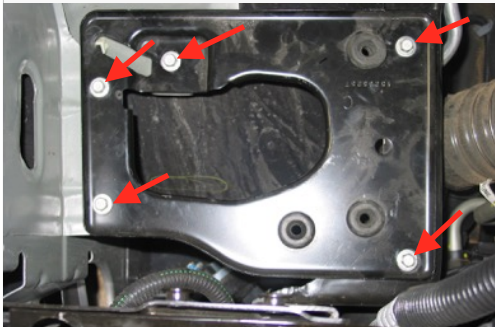
3. Loosen both hose clamps and remove the stock intake tube from the vehicle.



4. Pull up on the stock air box to release the prongs from the two rubber grommets on stock air box tray.



5. Remove the five bolts on the stock air box tray and remove the tray from the vehicle. Be sure to save the speed clips underneath. They will be reused to install the Air Box (G) in Step 9.



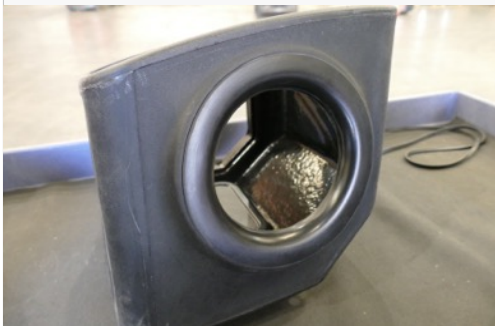
6. Remove the plastic shield from behind the headlight by prying the tabs loose.



7. Insert the Fender Seal (R) onto the Air Box (G).



8. Insert the Tube Seal (H) onto the Air Box (G).



9. Install the Air Box (G) into the truck. Use the provided Screw and Washer (S&T) to secure the air box to the truck.



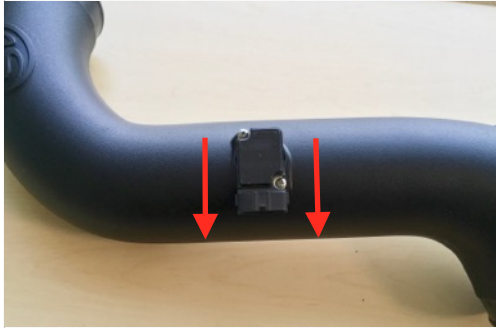
SEE EXPLODED VIEW ON PAGE 4

INSTALLATION INSTRUCTIONS (CONTINUED)

10. Determine whether or not you want to install the Box Plug (Q).



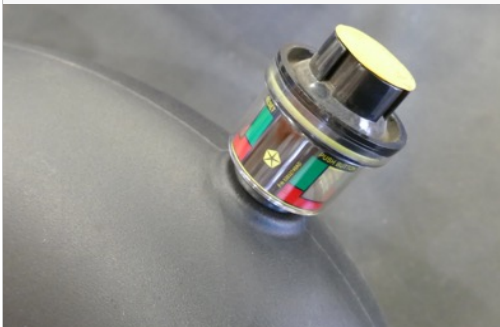
11. Remove the sensor from the stock intake tube. Use the provided Foam Gasket (K), MAF Plate (J), and Screws (I) with Lock Washer to install the MAF sensor into the Air Tube (L). The MAF sensor should be installed in the same orientation as shown below. **Note:** The MAF connector should be facing the coolant reservoir when installed in the vehicle.



12. Insert the provided Grommet (P) into the Air Tube (L) if your vehicle came with a Filter Minder.



13. Insert the filter minder into the grommet.



14. If you decide you do not want to reuse the filter minder, use the Grommet Plug (P) that was provided instead.



15. Insert the Air Filter (E) into the Air Box (G).



16. Slide the Coupler (N) and two #72 Hose Clamp (M) onto the Air Tube (L). Tighten the hose clamp closest to the tube. Leave the other end loose.



17. Insert the Air Tube (L) first into the Air Box (G) and then slide the other end of the Coupler (N) onto the turbo mouthpiece. Tighten the #72 Hose Clamp (M).



18. Slide the Air Filter (E) onto the Air Tube (L) and tighten the #80 Hose Clamp (F).



19. Press the Edge Trim Seal (D) into the grooves on the Air Box (G).



20. Remove the protective covering from the Clear Lid (A).



SEE EXPLODED VIEW ON PAGE 4

INSTALLATION INSTRUCTIONS (CONTINUED)

21. Place the Clear Lid (A) on top of the Air Box (G) and secure the lid using the four provided Screw (B) and Washer (C).



22. Reconnect the MAF sensor harness.



23. Reconnect the negative terminal on the battery. Inspect your installation, make sure the kit is properly positioned and all fasteners are secure. The installation is now complete.



RELATED ITEMS FOR YOUR PURCHASE



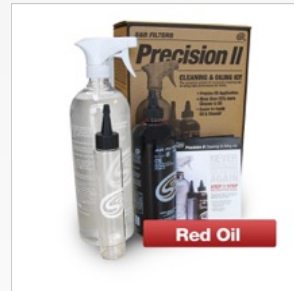
Air Filter Wrap
SKU# WF-1023



Replacement Cotton Filter
SKU# KF-1035



Replacement Dry Filter
SKU# KF-1035D



Precision II: Cleaning & Oil Kit
SKU# 88-0008



Intake Scoop
SKU# AS-1009

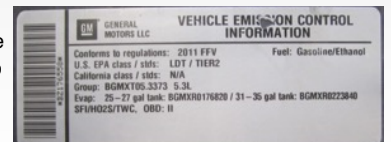
Order online today at www.sbfilters.com or through your local S&B distributor.

PERFORMANCE TESTING

- Engage parking brake and start your engine. Listen for abnormal noises. If an air leak is detected, re-inspect hoses and connections as they may need to be repositioned and tightened.
- S&B FILTERS recommends that you keep your OE intake system in the event it is required in the future.
- In order to maintain your warranty, all connections and components must be checked periodically for alignment and for proper tension on all connections. Failure to do so may void your warranty.
- Use only S&B FILTERS cleaning and oil products to service your filter. Using any other brand oil and or cleaners on your S&B air filter may void your warranty.

WARNING!

If your vehicle has a Vehicle Emission Control Information decal affixed to the factory airbox, a new replacement label must be obtained and installed in a readily visible position in the engine compartment in order to remain CARB compliant. Failure to do so will prevent the vehicle from passing a smog check. Replacement labels can be ordered from your local dealership. Regulations state that the VECI label shall not be affixed to any equipment which is easily detached from the vehicle. Label placement, under the hood on a painted surface is recommended.



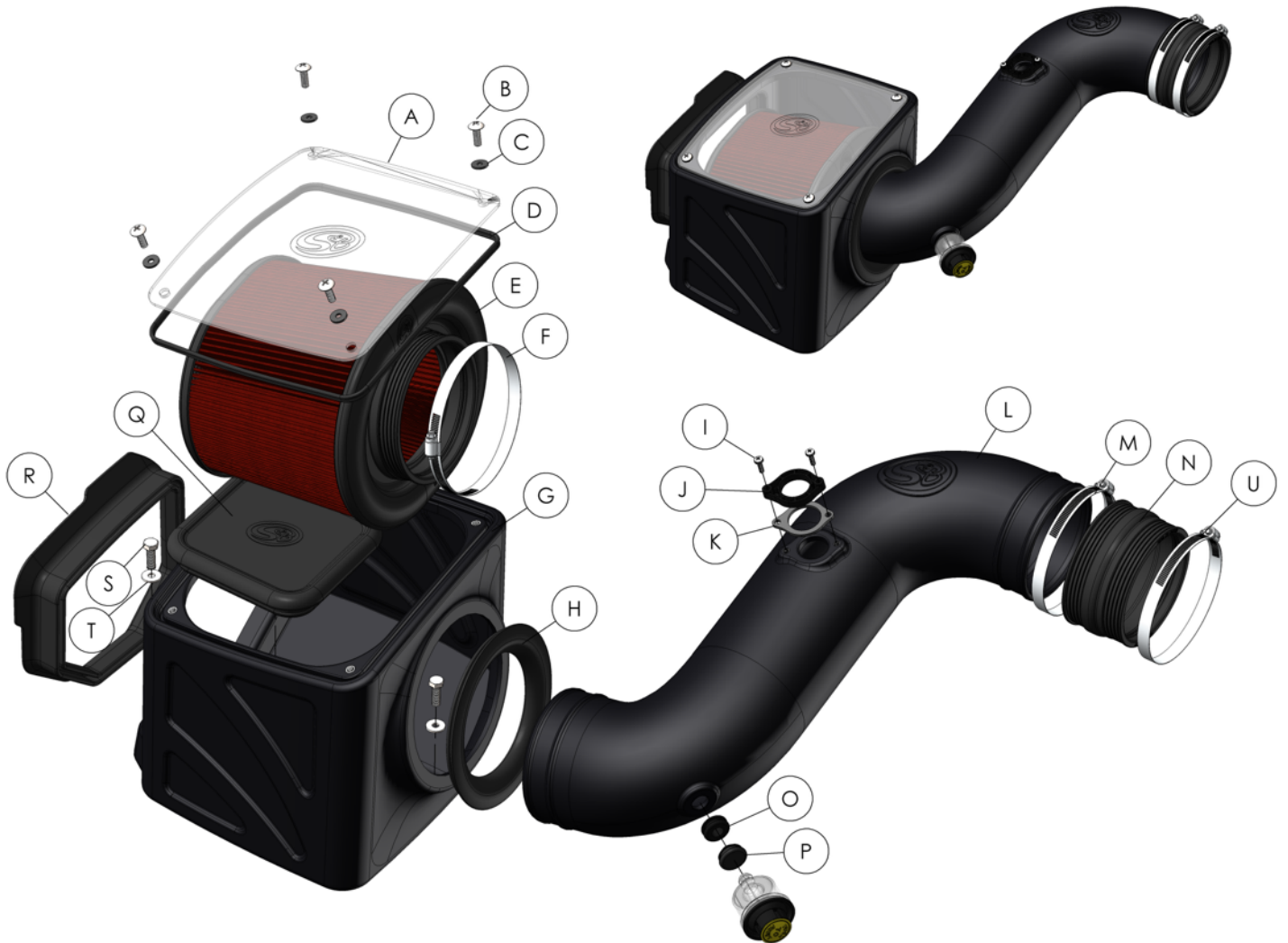
EMISSIONS STANDARD

The California Air Resource Board (CARB) requires that an E.O. identification label be applied to the vehicle in order to pass a smog check inspection when a Performance Intake Kit has been installed. You must place the E.O. label provided on or near the intake kit after installation so that a smog check technician can easily verify the E.O. number. As of April 2009, S&B has never had a product where CARB denied an exemption request; however, the exemption process with CARB can take as long as 18 months. Check the status of the exemption process by looking up a specific part number at www.sbfilters.com. The CARB Exemption number and/or status is listed under the Product Details section for each part number. If the status shows as "Pending," CARB has yet to issue an exemption. Products that have not been issued an EO number are street legal in most states, but may not be used on emission controlled vehicles in the state of California and are for off road use only. If you purchased your kit from S&B Filters directly, we will automatically mail you your Exemption Sticker when it is issued to us. If you purchased your kit from an authorized S&B Filters Dealer, log onto our web site and register to receive your Exemption Sticker.

SEE EXPLODED VIEW ON PAGE 4



EXPLODED VIEW



ITEM	QTY.	DESCRIPTION	P/N	ITEM	QTY.	DESCRIPTION	P/N
A	1	CLEAR LID	AH1716-00	O	1	GROMMET	AI1563-00
B	4	SCREW, TRUSS HEAD	AH1684-00	P	1	GROMMET PLUG	AI1705-00
C	4	RUBBER WASHER	AH1571-00	Q	1	BOX PLUG	AI1718C-00
D	1	LID SEAL	AH1766-04	R	1	FENDER SEAL	AI1723C-00
E	1	AIR FILTER	KF-1035	S	2	SCREW, M6	AI1415-00
F	1	HOSE CLAMP, #80	AG1010-00	T	2	WASHER, M6	AI1535-00
G	1	AIR BOX	AL1241B-00	U	1	HOSE CLAMP, #60	AG1008-00
H	1	TUBE SEAL	AH1717C-00				
I	2	SCREW WITH LOCK WASHER	AH1837-00				
J	1	MAF PLATE	AH1722-00				
K	1	FOAM GASKET	AH1777-00				
L	1	AIR TUBE	AL1241-00				
M	2	HOSE CLAMP, #64	AG1018-00				
N	1	COUPLER	AH1337C-00				