



# FILTERS

## COLD AIR INTAKE

### INSTALLATION INSTRUCTIONS:

P/N: 75-5104 / 75-5104D





# FILTERS

**BREATHE EASY. YOUR ENGINE & WARRANTY ARE PROTECTED.™**

**Thank You!** for purchasing your new S&B Filters intake kit. If at any time you need additional assistance with installation or have any other questions or comments, feel free to call our customer service department at 909-947-0015. You can also take advantage of our live chat at [www.sbfilters.com](http://www.sbfilters.com) and connect with an S&B representative immediately. We hope you enjoy your new S&B Filters product and thank you for your continued support. Breathe Easy. Your Engine and Warranty Are Protected.

## VEHICLE APPLICATION:

**YEAR:** 2011-16

**MAKE:** Ford

**MODEL:** F-250/F-350

**ENGINE:** 6.7L Powerstroke

**APPROX. INSTALL TIME:** 1HRS | 00MIN

## TOOLS REQUIRED:

- 8mm, 10mm Wrench/Socket
- 5/16" Nut Driver or Flat Blade Screwdriver
- T20 Torx (**supplied**)
- Phillips Screwdriver
- Scissors
- Panel Popper

## NOTES:

Kit may not fit with the following Aftermarket Parts installed:

- Body Lift or Lowering Kit
- Custom Hood
- Throttle Body Spacer/ Upgrade

## CARB STATUS - EXEMPT

Product will be submitted to Air Resources Board for approval shortly.

**Not Legal for use in CA or other states adopting CA emissions standards"**  
See Page 2 for more info.

## S&B FILTER MAINTENANCE:

- Cleanable (KF-1050). If the enclosed filter is Red, it came preoiled from the factory. Please visit [www.sbfilters.com](http://www.sbfilters.com) for exact oil amount required after cleaning.
- Disposable (KF-1050D). If the enclosed filter is White, it is a disposable filter and should be discarded once it reaches capacity. This filter **does not require oil**. For more info on S&B's disposable filter, visit [www.sbfilters.com](http://www.sbfilters.com).
- Foam Filter: Service and check the condition of your foam filter every time you service your air filter. Wash it with water or gently blow it off with compressed air. If it can't be cleaned with water or compressed air, or it is torn or damaged, please replace the foam filter. **HP1473-00** is the replacement foam kit that includes (1) Foam Filter, (1) Foam Retainer, and (3) Screws.

## BEFORE YOU START

- Please read the entire product guide before proceeding.
- Ensure all components listed on pages 3 & 4 are present.
- If you are missing any of the components, call our customer support at (909) 947-0015.
- Do not work on your vehicle while engine is hot.
- Make sure the engine is turned off and the vehicle is in Park or the Parking Brake is set.

## RELATED ITEMS FOR YOUR PURCHASE

Order Online today at [www.sbfilters.com](http://www.sbfilters.com) or through your local S&B distributor.



**Filter Wrap**  
SKU# WF-1031



**Replacement Cotton Filter**  
SKU# KF-1050



**Replacement Dry Filter**  
SKU# KF-1050D



**Precision II:  
Cleaning & Oil Kit**  
SKU# 88-0008

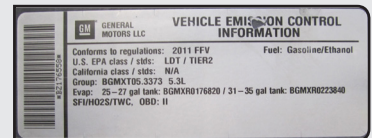
## Air Box Plug Testing

Stock air boxes are a significant contributor to poor air flow which is why S&B designs custom air boxes with secondary and/or enlarged openings. With that said, S&B recognizes the benefits of cooler air, so we have included a plug to seal off the opening if so desired. For optimal performance, we recommend that the intake be used without the end cap except in conditions of extreme heatwave.

## Performance Testing

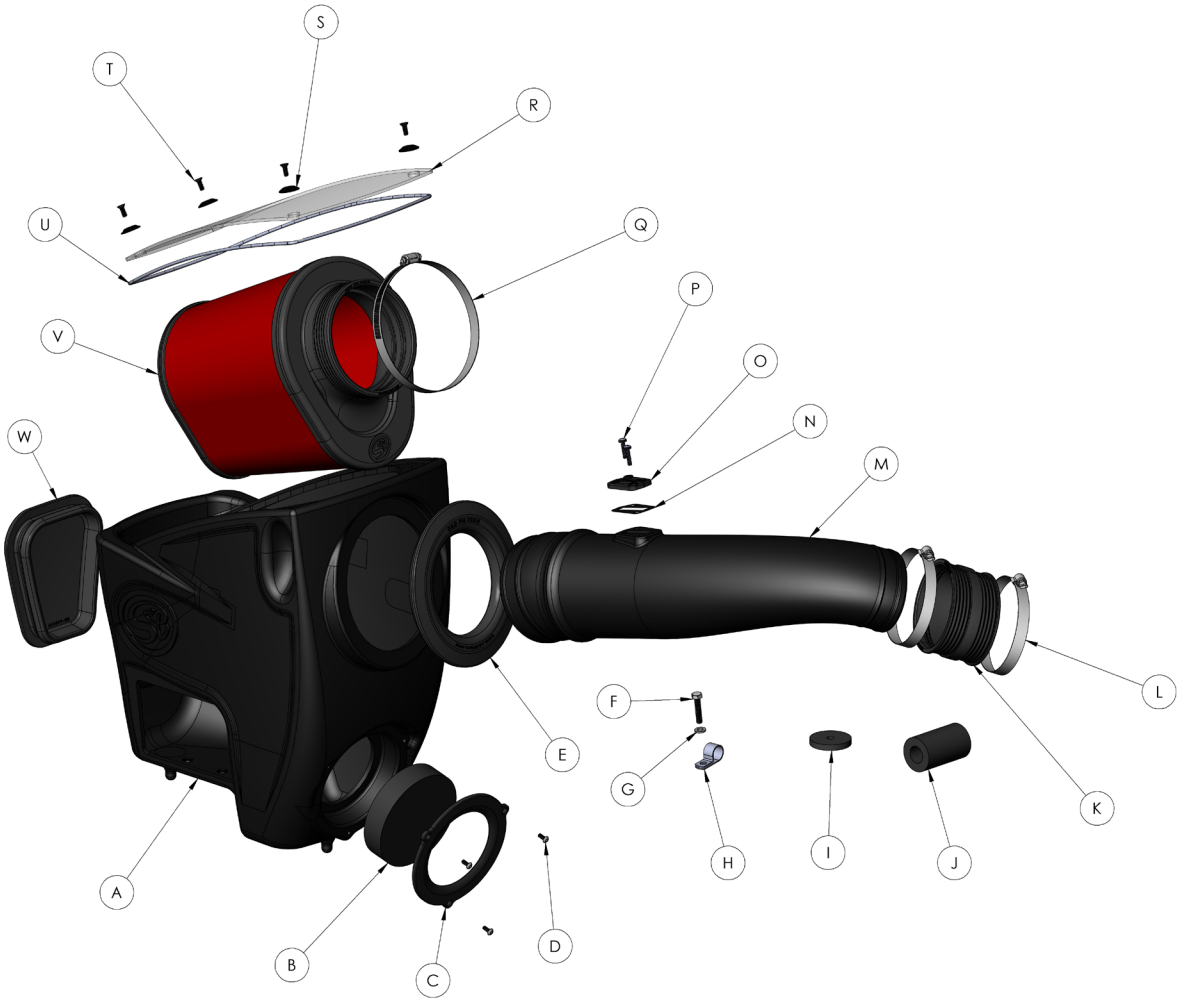
- After your installation is complete engage parking brake and start your engine. Listen for abnormal noises. If an air leak is detected, re-inspect hoses and connections as they may need to be repositioned and tightened.
- S&B FILTERS recommends that you keep your OE intake system in the event it is required in the future.
- In order to maintain your warranty, all connections and components must be checked periodically for alignment and for proper tension on all connections. Failure to do so may void your warranty.
- Use only S&B FILTERS cleaning and oil products to service your filter. Using any other brand oil and/or cleaners on your S&B air filter may void your warranty.

**Warning!** If your vehicle has a Vehicle Emission Control Information decal affixed to the factory airbox, a new replacement label must be obtained and installed in a readily visible position in the engine compartment in order to remain CARB compliant. Failure to do so will prevent the vehicle from passing a smog check. Replacement labels can be ordered from your local dealership. Regulations state that the VECl label shall not be affixed to any equipment which is easily detached from the vehicle. Label placement, under the hood on a painted surface is recommended.



**Emissions Standard** The California Air Resource Board (CARB) requires that an E.O. Identification label be applied to the vehicle in order to pass a smog check inspection when a Performance Intake Kit has been installed. You must place the E.O. Label provided on or near the intake kit after installation so that a smog check technician can easily verify the E.O. Number. The exemption process with CARB can take as long as 18 months. Check the status of the exemption process by looking up a specific part number at [www.sbfilters.com](http://www.sbfilters.com). The CARB Exemption number and/or status is listed under the Product Details section for each part number. If the status shows as "Pending," CARB has yet to issue an exemption but the product has been submitted. Products that have not been issued an E.O. number are street legal in most states, but may not be used on emission controlled vehicles in the state of California and are for off road use only. If you purchased your kit from S&B Filters directly, we will automatically mail you your Exemption Sticker when it is issued to us. If you purchased your kit from an authorized S&B Filters Dealer, log onto our web site and register to receive your Exemption Sticker.

**EXPLODED VIEW:**



# PARTS LIST: 75-5104/75-5104D

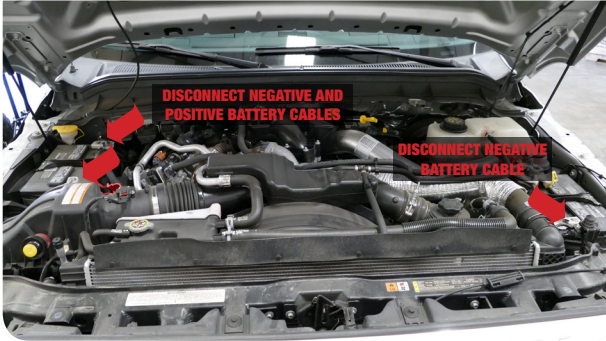
ITEM	QTY	DESCRIPTION	PART NUMBER
A	1	AIR BOX	AL1305B-00
B	1	FOAM	AI1961-00
C	1	FOAM RETAINER	AI1960-00
D	3	SCREW, PAN, M4 X 10MM	AI1473-00
E	1	TUBE SEAL	AI1650C-00
F	1	SCREW, HEX, M6 X 10mm	AI1257-00
G	1	WASHER, M6	AI1416-00
H	1	LOOP CLAMP, 5/8" OD X 1/2" WIDE	AI1511-00
I	1	WASHER, RUBBER	AI1471-00
J	1	INSULATION TUBE, 3/4" ID	AI1522-01
K	1	COUPLER	AI1523C-00
L	2	HOSE CLAMP, #72	AG1009-00
M	1	INTAKE TUBE	AL1305-00
N	1	MAF GASKET	AI1823-00
O	1	MAF PAD	AI1822-00
P	2	SCREW, SEMS, #8-32 x 3/4"	AI1837-00
Q	1	HOSE CLAMP, #80	AG1010-00
R	1	CLEAR LID	AI1980-00
S	4	LID WASHER	AI2006-00
T	4	SCREW, FLAT, #10-24 X 1/2"	AI2005-00
U	1	LID SEAL	AI1766-02
V	1	AIR FILTER	KF-1050
W	1	BOX PLUG	AI1597C-00
ITEMS BELOW ARE NOT SHOWN IN THE EXPLODED VIEW			
X	1	T20 TORX KEY	AI1327-00

AM0336-00 REV-C 08/02/2018

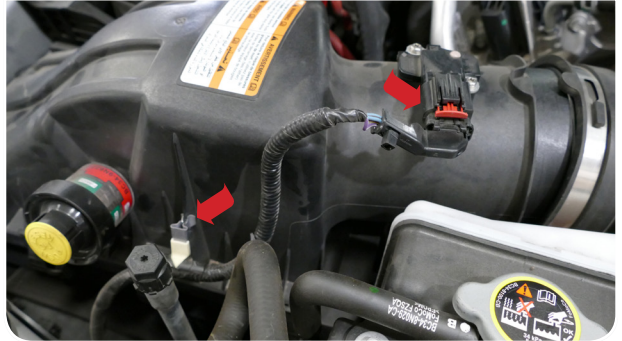
HARDWARE PACKS
HP1470-00
AG1009-00
HP1407-00
AI1837-00
AI1822-00
AI1823-00
HP1199-00
AI1471-00
AI1511-00
AI1257-00
AI1416-00
AI1327-00
HP1474-00
AI2005-00
AI2006-00
AI1522-01
HP1473-00
AI1961-00
AI1960-00
HP1472-00
AI1473-00
HP1471-00
AI1980-00
AI1766-02

## INSTALLATION STEPS:

- 1** With the ignition switched off and the parking brake set, disconnect the negative battery cables on both batteries and the positive battery cable on the passenger side battery. **Note: Failure to disconnect the battery may cause the CEL to illuminate upon completion of the installation and subsequent operation. Do not skip this step!**  
**Tool Required:** 8mm Socket/Wrench



- 2** Disengage the red locking clip, press down on the tab, then pull out to disconnect the MAF sensor harness from the MAF sensor. Unclip the wiring harness from the stock intake lid.  
**Tool Required:** Panel Popper or Flat Blade Screwdriver



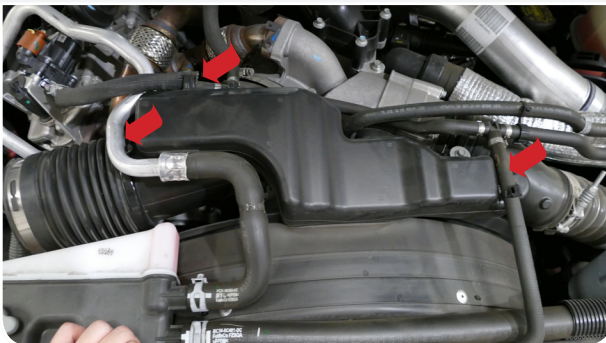
- 3** Loosen the hose clamp at the intake tube and unhook the four clips on the stock intake lid. Remove the stock intake tube from the vehicle.  
**Tool Required:** 5/16" Nut Driver or Flat Blade Screwdriver



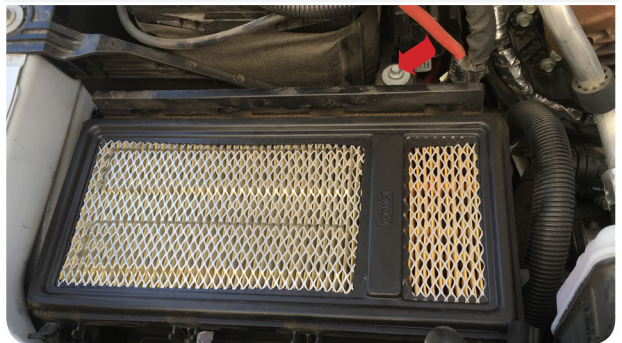
- 4** Loosen the hose clamp at the turbo inlet and remove the screw securing stock intake tube.  
**Tools Required:** 5/16" Nut Driver or Flat Blade Screwdriver, 8mm Socket/Wrench



- 5** Disconnect all rubber hoses and coolant lines then remove the stock intake tube from the vehicle.



- 6** Remove the screw securing the air box to the battery tray. Set this screw aside, it will be reused in Step 13.  
**Tool Required:** 8mm Socket/Wrench



- 7** Carefully remove the stock air box out of the vehicle. Check to make sure that the rubber grommets are still in the vehicle and did not get pulled out with the air box.



- 8** Remove the stock intake inlet gasket from stock air box and install it onto the Air Box (A).



- 9** Install the Tube Seal (E) onto the Air Box (A).



- 10** Install the Foam (B), Foam Retainer (C), and M4 Screws (D) onto the Air Box (A). **Note:** For information on servicing the Foam Filter go to the "S&B Filter Maintenance" on Page 1. **Tool Required:** Phillips Screwdriver



- 11** Determine if you want to install the Box Plug (W) onto the Air Box (A) or leave it open. See the "Air Box Plug" note on Page 2 for more information. If the Box Plug is desired, simply press the Box Plug into the box opening until it snaps into place.

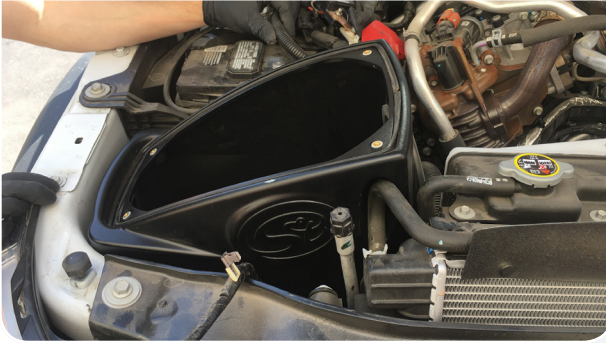


- 12** Place the Rubber Washer (I) on top of the mounting clip on the battery tray.



## INSTALLATION STEPS:

- 13** Install the Air Box (A) into the vehicle. You may have to move the positive battery cable out of the way to allow room for the mounting tab to settle into place. Push down on the air box to ensure the prongs are completely seated onto the stock grommets. Align the mounting tab with the stock mounting clip and Rubber Washer (I). Install the screw, removed in Step 6, through the mounting tab and rubber washer, then tighten.  
**Tool Required:** 8mm Socket/Wrench



- 14** Install the Coupler (K) and #72 Hose Clamps (L) onto the Intake Tube (M). Slide the coupler over the intake tube as much as possible so it is flush with the end of the tube. This will provide additional clearance during installation. Leave the hose clamps loose.



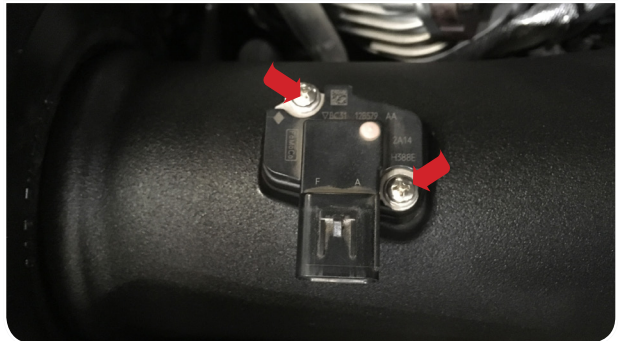
- 15a** Install the Intake Tube (M) into the Air Box (A). First start by feeding the tube underneath the A/C lines and through the Tube Seal (E). Note the angle of the tube for this step. The orientation of the tube will allow for an easier installation.



- 15b** Rotate the Intake Tube (M), to align the intake tube with the turbo inlet, then slide the Coupler (K) over the turbo inlet. Position the #72 Hose Clamps (L) to the side of the intake tube so that the hose clamp is not in direct contact with the rubber hoses. Tighten both hose clamps.  
**Tool Required:** 5/16" Nut Driver or Flat Blade Screwdriver



- 16** Carefully remove the MAF sensor from the stock intake tube and install it onto the Intake Tube (M) with the 8-32 Screws (P), MAF Pad (O) and MAF Gasket (N).  
**Tools Required:** T20 Torx, Screwdriver





**17** Place the Air Filter (V) into the Air Box (A), slide it onto the Intake Tube (M), then tighten the #80 Hose Clamp (Q).  
**Tool Required:** 5/16" Nut Driver or Flat Blade Screwdriver



**18** Press the Lid Seal (U) into the groove in the Air Box (A). Cut away any excess lid seal.  
**Tool Required:** Scissors



**19** Remove the protective covering from the Clear Lid (R).



**20** Place the Clear Lid (R) on top of the Air Box (A) and secure with the 10-24 Screws (T) and Lid Washers (S).  
**Tool Required:** Phillips Screwdriver



**21** Route the MAF sensor harness between the coolant line and reconnect it to the MAF sensor. Make sure to engage the red locking clip.



**22** To protect the intake tube from the A/C line, remove the paper backing from the Foam Wrap (J), wrap it around the A/C line, then press the adhesive against the foam wrap to secure it around the A/C line.



## INSTALLATION STEPS:

- 23** Secure the coolant hose near the turbo inlet with the Loop Clamp (H), M6 Screw (F) and Washer (G) onto the mounting location previously used by the stock intake tube in Step 4.  
**Tool Required:** 10mm Wrench/Socket



- 24** Reconnect all terminals on both batteries. Inspect your installation, make sure the kit is properly positioned and all fasteners are secure. Keep all stock parts in case you ever need to reinstall the stock intake assembly. Affix the ID label near the intake kit. The installation is now complete.  
**Tool Required:** 8mm Socket/Wrench

